



## What to do if there is a fire

Sit down with your family and make a fire escape plan together.

Following Drago's guidance on making an escape plan and what to do if there is a fire at [www.365alive.co.uk/drago](http://www.365alive.co.uk/drago).

Write down your family's action plan for:

- If there is a fire
- If the planned escape routes are blocked

## Drawing your escape plan

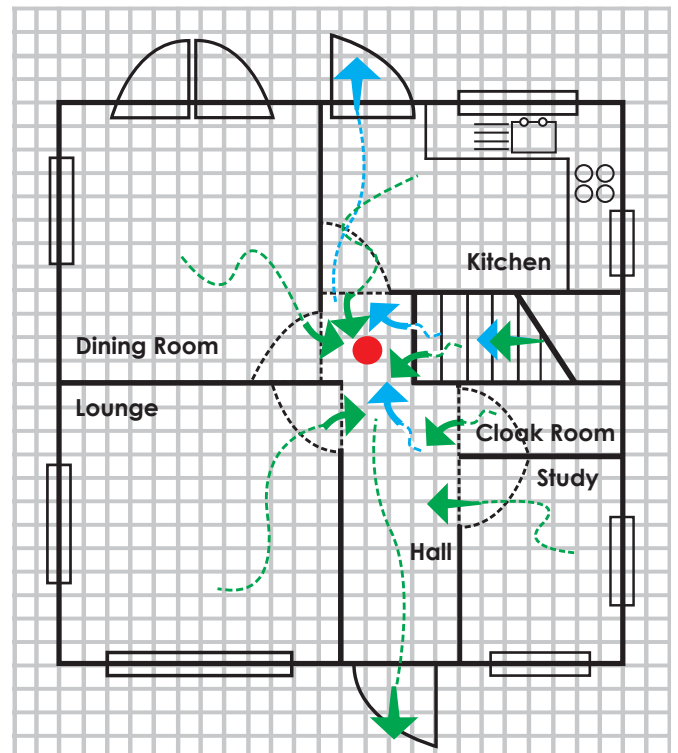
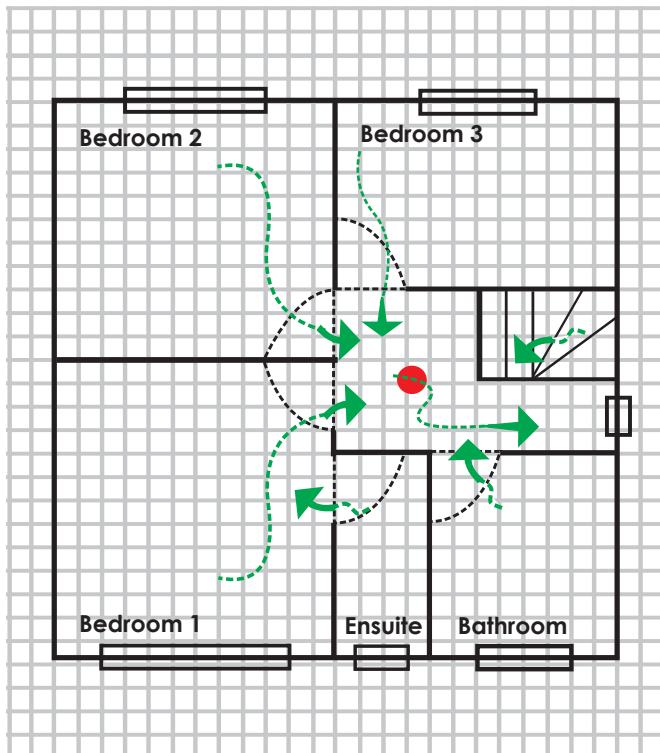
Mark the location of the **smoke alarms in red**, your **escape plan main route in green** and your **second escape route in blue** like the example below.



Upstairs plan



Downstairs plan



Fire escape plan for the \_\_\_\_\_ family

If there is a fire we will:

[Empty space for writing the fire response plan]

If the planned escape routes are blocked we will:

[Empty space for writing the blocked escape route plan]

**Upstairs escape plan**

[Empty grid for drawing the upstairs escape plan]

**Downstairs escape plan**

[Empty grid for drawing the downstairs escape plan]